



FLAGSTAFF HILL 6 Holmes Court

\$300,000 - SOLD

LAND, GLORIOUS LAND!

Property Web ID: 14035148618

**** UNDER INSTRUCTIONS FROM THE PUBLIC TRUSTEE ****

What a fantastic opportunity right here. Build your dream home in this superb residential location. Situated in a quiet cul de sac, within walking distance to the golf club, local shopping, and transport.

This irregular block is approximately 1,096sqm and zoned Residential – City of Onkaparinga.

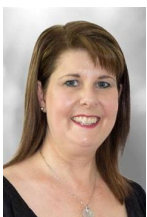
Surrounded by quality established homes and only 18kms south of Adelaide, Flagstaff Hill has always been a very sought after location.

Here is your chance to secure a great piece of dirt!

Council: City of Onkaparinga

Land Size: 1,096sqm (approx)

Zoning: Residential.



Debbie Mundy

Mobile: 0401 597 482

Email: debbie@smallacombe.com.au

Smallacombe Real Estate Mitcham - RLA 1520



Sadie White

Mobile: 0419 328 328

Email: sadie@smallacombe.com.au

Smallacombe Real Estate Mitcham - RLA 1520