

804/27 Cordelia Street, **South Brisbane**

This opportunity is waiting for you!

Are you a savvy investor or a first home owner? This is a unit you don't want to miss.

This apartment offers a huge living space of 60m<sup>2</sup>. Soda is a seductive fusion of the vibrant city life and chic view-filled living spaces in one iconic building. Soda's sensational roof top pool, lounge deck and ground floor retail tenancies will make you never want to leave. This 1 bed 1 bath room is a perfect entry to the investment market or as a first home owner.

The apartment has a decidedly generous nature, proving that comfort and style mix with a cool, contemporary and distinct urban edge. The open eat-in kitchens promote ease of living while reconstituted stone benches, metallic mirror splash backs and integrated European appliances plus microwaves make them a pleasure to work in.

- Sitting on Fish Lane, one of the main new-design council-approved Laneway developments
- Entire ground floor dedicated to boutique retail opportunities
- Rooftop Pool and Deck over-looking stunning Brisbane City
- Residents-only Gym on podium level with city-views (24hr access)
- Communal herb garden within tower
- 5-10 minute walk to everything, including the CBD
- 24 hour bus routes on your doorstep
- Well-appointed kitchen with breakfast bench, plus separate laundry
- Architecture by nationally renowned Ellivo Architects

Body corporate \$3200 per year approx  
Council rates \$1200 per year approx

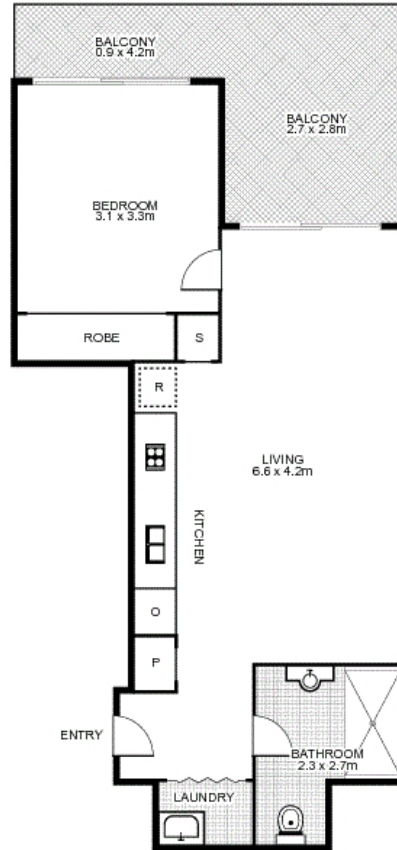
1 1

ID# 11022103458



**Justin Wynn**  
07 3840 5962  
0413 220 496

**804/27 Cordelia Street,  
SOUTH BRISBANE**



ALL MEASUREMENTS AREA APPROXIMATE

Approx. Internal Area : 48.8m<sup>2</sup>

External Area : 11.3m<sup>2</sup>

Total Area : 60.18m<sup>2</sup>



This floor plan is intended as a guide only. Layout dimensions are approximate only. No representation or warranties of any nature whatsoever are given or intended. Any person using this information should rely on their own enquiries.