

4/11 Britannia Road, Nairne

4  2  2 

Fresh Family Home With Leafy Outlook

Tucked within a quiet cul-de-sac in the Adelaide Hills, this Nairne home presents an eye catching facade.

Rectangular columns, contrasting stonework and manicured front gardens welcome you to 4/11 Britannia Rd. With four bedrooms, two bathrooms, multiple living spaces and a secure large back yard, this is a family home just a stone's throw from the heart of Nairne, schools and recreational facilities.

Recently updated, new floor coverings have been laid and the home has been freshly painted throughout. The sleek kitchen features new benches, a new induction cooktop and contrasting splash-back and breakfast bar. The open plan kitchen flows into the dining/family room, adjacent to the large, separate living room and spacious, covered timber deck overlooking park and bushland.

The master bedroom features an ensuite and walk in robe, and two of the remaining three bedrooms have built in robes. Two split system air conditioning units ensure climate comfort throughout the year.

A double lock-up garage offers secure storage for two vehicles or space for a workshop.

Highlights include:

- Private cul-de-sac location
- Close to playground and park
- Walking distance to main street
- Great aspect from the elevated timber deck

CT / 5935/836
Council / Mount Barker District Council
Zoning / Residential
Built / 2007
Internal / 147.2 sqm
Land / 770 sqm
Council Rates / \$2246.00 pa
SA Water / \$73.10 pq
ES Levy / TBA

 770 sqm

\$475,000

ID# 11058100129

Open for Inspection

Sun 21 Jan, 1:00pm - 1:30pm

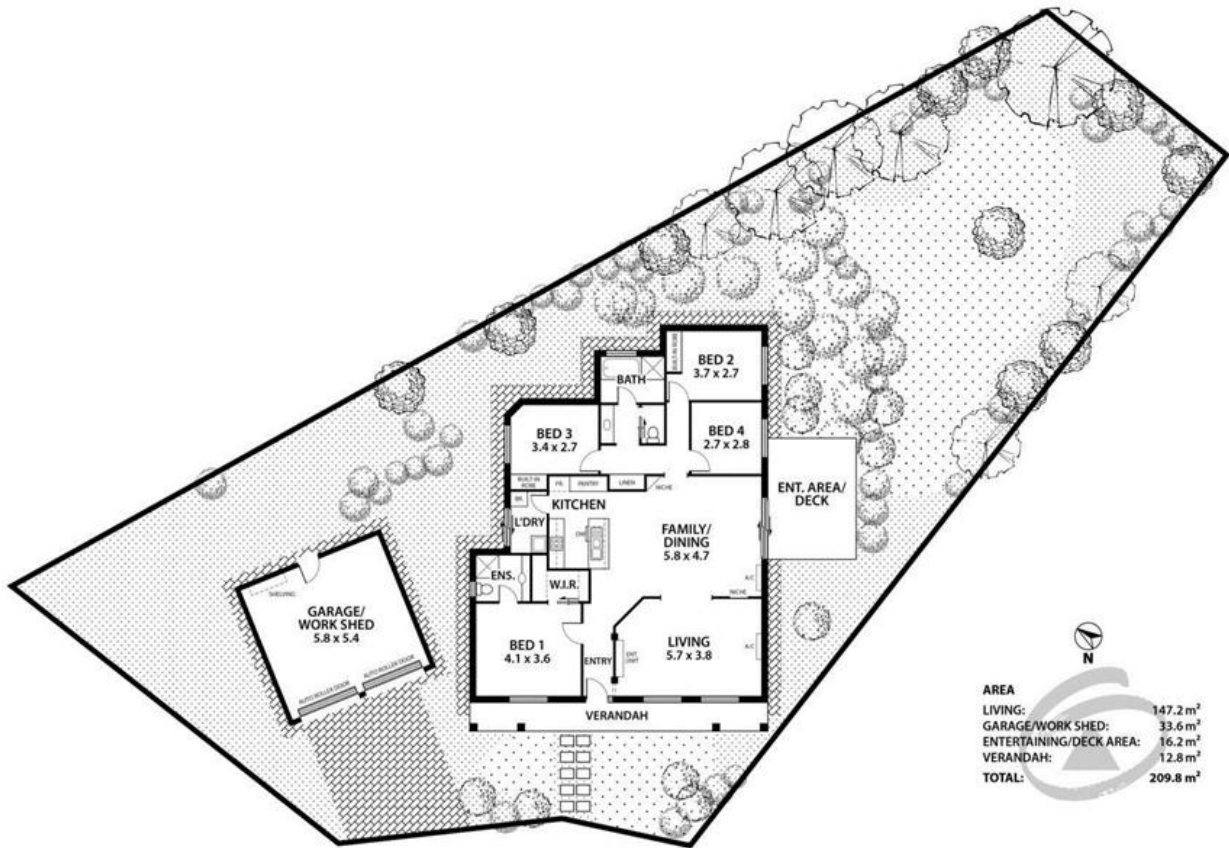


Annabelle Greenslade

08 8398 1404

0409 325 823

The above information has been furnished to us by the vendor of each property. We have not verified whether or not that information is accurate and have no belief one way or another in its accuracy. We do not accept any responsibility to any person for its accuracy and do no more than pass it on. all interested parties should make and rely upon their own enquires in order to determine whether or not this information is in fact accurate.



AREA	
LIVING:	147.2 m ²
GARAGE/WORK SHED:	33.6 m ²
ENTERTAINING/DECK AREA:	16.2 m ²
VERANDAH:	12.8 m ²
TOTAL:	209.8 m²

BRITANNIA COURT

This floorplan is for illustration purposes only and all measurements are approximate. Any information that is intended to be relied upon should be independently verified. Neither the agent or the illustrators take any responsibility for any omission, wrongful inclusion or typographical error which may occur in this drawing as it is intended as an artist's impression only. While every endeavor has been made to verify the correct details in this floor plan, neither the agent, vendor, nor illustrators accept any responsibility for any error or omission.