



2/7 Woodland Drive, Reedy Creek

3 2 2

SOLD BY DALE HARRIS

DRAMATICALLY REDUCED

Approx 1887sqm of yard and a new home, bet you can't find anything else like this in the area, especially at this price.

Just when you thought it can't get any better, the property is completely private and backs onto bushland giving a great feeling of "being away" from it all.

The reality is you are only mins from everything.

Here are some of the best features of this unique property.

- Daikin ducted air con with "Smart Device Connectivity"
- Under cover entertaining area
- Stone Benchtops
- Gas cooktop
- Rain water tank connected to toilets
- Quality tiles and carpet throughout
- Ultra-modern bathrooms
- Mins to the M1
- Local shops at the end of the street
- Train station mins away
- Robina Town Centre mins away
- Burleigh Beach, Cafes and restaurants under 15 mins drive
- Gold Coast airport under 20 mins drive.

Hard to believe you can have all this with so much land.

Come and discover one of the Gold Coast's best kept secrets, Reedy Creek you will not be disappointed.

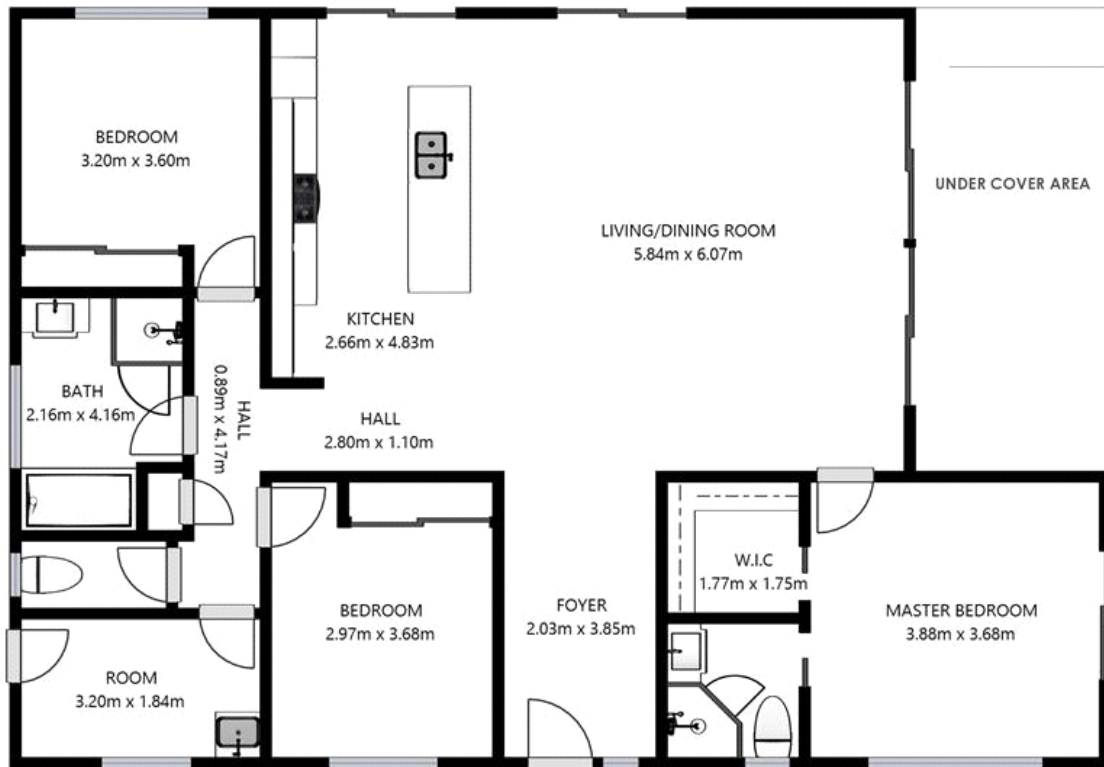
If you would like to take a new, different, 3D VR Walk Thru of this outstanding property at your own pace click on the Video link – you can spend all the time you want.

Offers Over \$599,000

ID# 11094108701



Dale Harris
 07 5522 3101
 0401 009 197



SIZES AND DIMENSIONS ARE APPROXIMATE, ACTUAL MAY VARY

