



1079 Avonside Road, Jindabyne

5  2  2 

Turn your rural lifestyle dream into reality

- * 280 Acres/120Ha rural property with 1.5km of Snowy River frontage.
- * Spectacular Snowy Mountains main range views and large rural acreage.
- * Perfect private fishing locations along the Snowy River with an abundance of Brown and Rainbow trout, a fisherman's dream
- * Just a 50 Minute drive to the Perisher and Thredbo ski resorts and 2 hours from Canberra.
- * A homestead constructed out of full brick sitting at an elevation of 1,150m above sea level.
- * The residence consists of 5 bedrooms, and 2 bathroom/laundry with a renovated, open plan kitchen and living room.
- * The kitchen features a wood fired Aga which reticulates hot water into all the bedrooms cutting gas and electricity bills. Coupled with modern gas and electric appliances, marble bench top and large walk in pantry.
- * The property features a large, internal double lock up garage.
- * The property is fenced in several paddock areas suitable for livestock.
- * The infrastructure consists of approximately 100,000L of drinkable water with the catchment coming from the roof of the property and 3 large sheds/stable areas, with additional separate garden water tanks.
- * Beautifully constructed rock wall and fire pit overlooking the magnificent Snowy Mountains main range, made from river rock collected from the property and built by renowned local stone mason.
- * Large metal pergola over a tiled entertaining area, perfect for watching the sunset over the mountains
- * The property has an approved bore licence in place.
- * 5 Kilowatt solar panel grid system

 280 acre

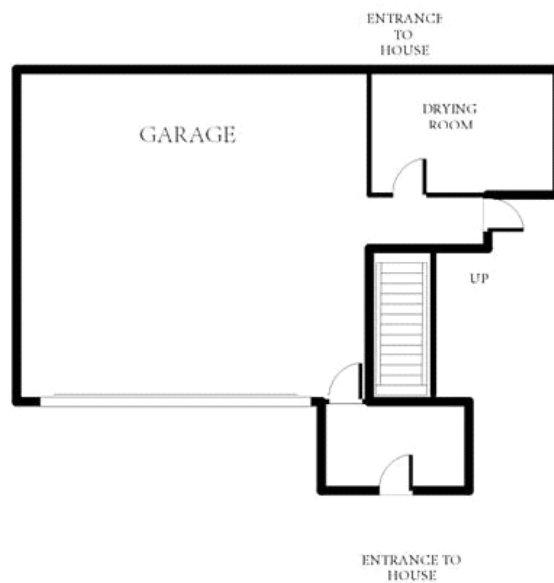
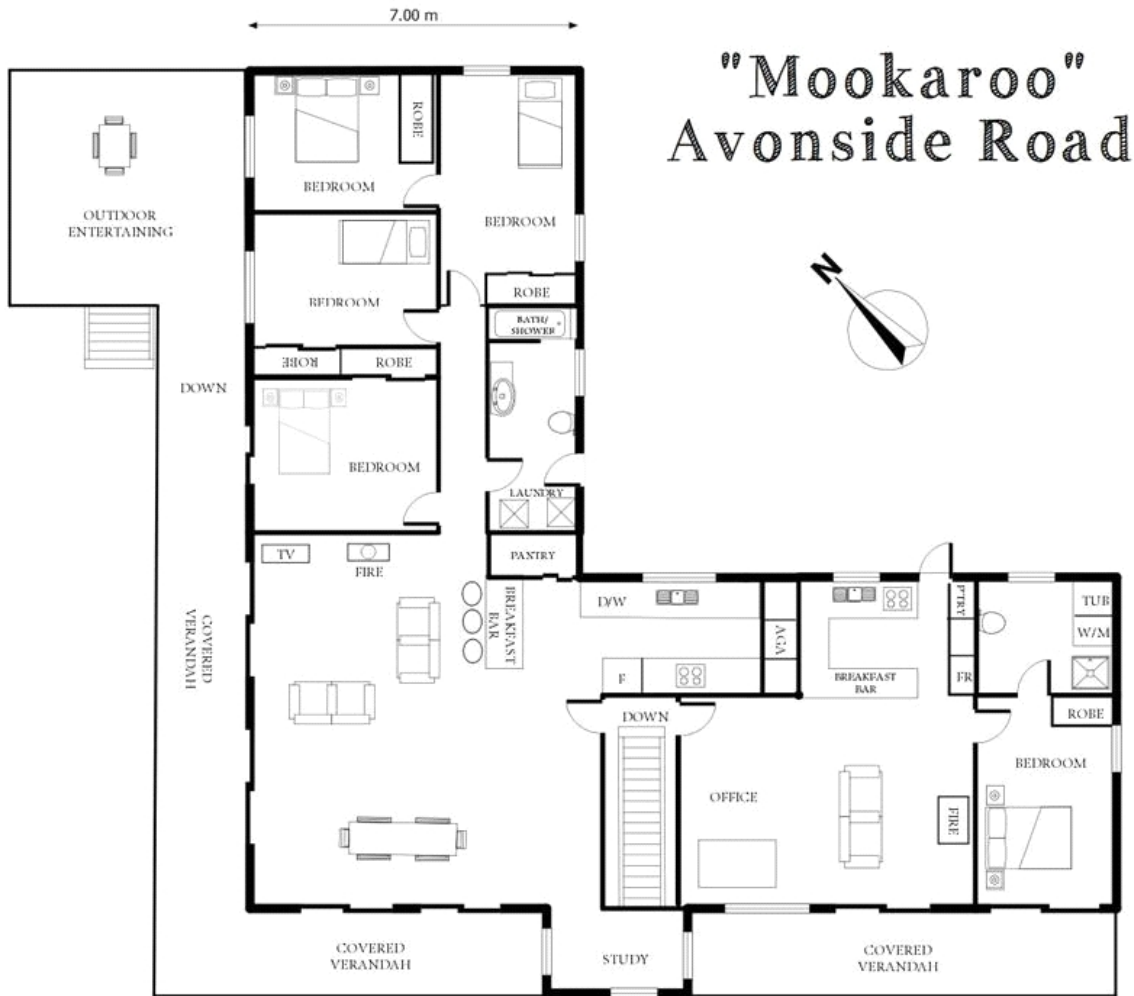
\$1,200,000

ID# 11353101530



Alex Dickson
02 6457 2000

The above information has been furnished to us by the vendor of each property. We have not verified whether or not that information is accurate and have no belief one way or another in its accuracy. We do not accept any responsibility to any person for its accuracy and do no more than pass it on. all interested parties should make and rely upon their own enquires in order to determine whether or not this information is in fact accurate.



Whilst every attempt has been made to ensure the accuracy of the floor plan, measurements are approximate and no responsibility is taken for any errors or omissions.
 This plan is for illustrative purposes only
 Kerry Beer Photography
 (c) Visual Floor Planner