



30A Lae Road, **Holsworthy**

Brand New Luxury Duplex in Central Location!

This remarkable architect designed home effortlessly brings a new standard of luxury living to the area!

Boasting five double bedrooms, master with ensuite and private balcony, guest accommodation and full bathroom on the ground floor, light filled open plan living and dining areas, gourmet kitchen with 40mm waterfall stone bench-tops, 900mm gas stove-top and oven, large matte finished porcelain tiles, high ceilings, ducted air conditioning, Bosch alarm system, dual video intercom, LED down-lights throughout, fully fitted laundry with quality stone benches and more have your family and guests delighted as they venture from the living area through the floor-to-ceiling doors to recline at the spacious alfresco fitted with a stone kitchenette and bbq provisions time to entertain? We think so!

All of this is only 950m away from Holsworthy train station and even less to local schools and shops ... this central location compliments what is arguably one of the best duplexes we've seen in the suburb... but don't take our word for it, come and see for yourself!

Book your inspection today!

5  3  1 

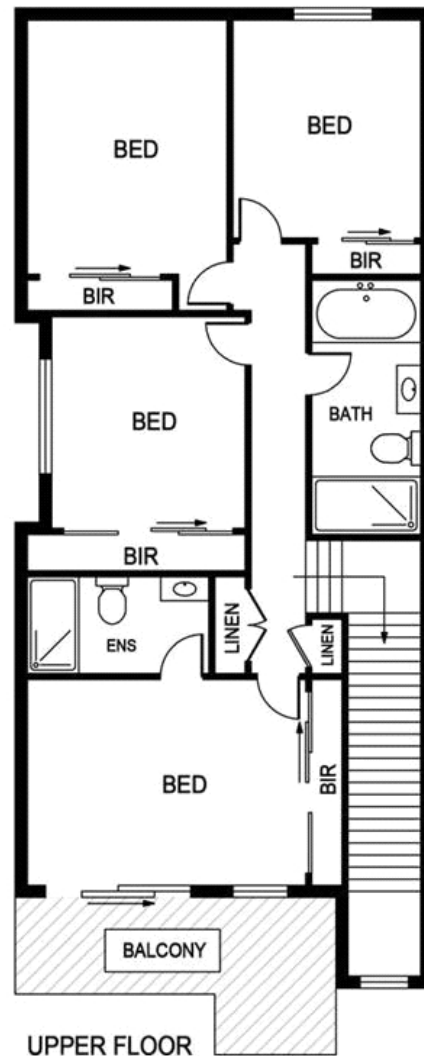
FOR SALE BY AUCTION

ID# 11388100347

Auction Time
Sat 28 Apr, 12:30pm



Chris Davidson
0431437758



30A LAE ROAD, HOLSWORTHY

Whilst every attempt has been made to ensure the accuracy of the floorplan contained here, it reflects the current configuration and use, and not council approvals of such. In addition, measurements of doors, windows and rooms and any other items are approximate and no responsibility is taken for any error, omission or mis-statement. This plan is for illustrative purposes only and should be used as such by any prospective purchaser. The services and appliances shown here have not been tested and no guarantee as to their operability or efficiency can be given.