



9a Hazel Street, Ascot Park

2  1  1 

This Could Be The One You've Been Looking For!

Offering super low maintenance, this as new home will appeal on all levels!

Set in a quiet group of 4, the home boasts easy care living with modern neutral décor throughout.

Suited first home buyers, retirees and investors alike, the space efficient layout includes 2 good sized bedrooms (main with robes), floating floors throughout and the all-important ducted RC/AC.

The kitchen is well appointed and overlook the rear courtyards.

Other features include garage with auto roller door and low maintenance gardens with a large water tank is fitted to the property to save your water bills.

All this conveniently located to the Ascot Park railway station, Park Holme Shopping Centre and library are within walking distance. Schools abound, Sacred Heart middle school, Hamilton College, and Westminster Private School are all local and two shopping centres, Edwardstown and Marion Shopping Complex are also within easy reach.

Call NOW to Arrange YOUR Inspection!

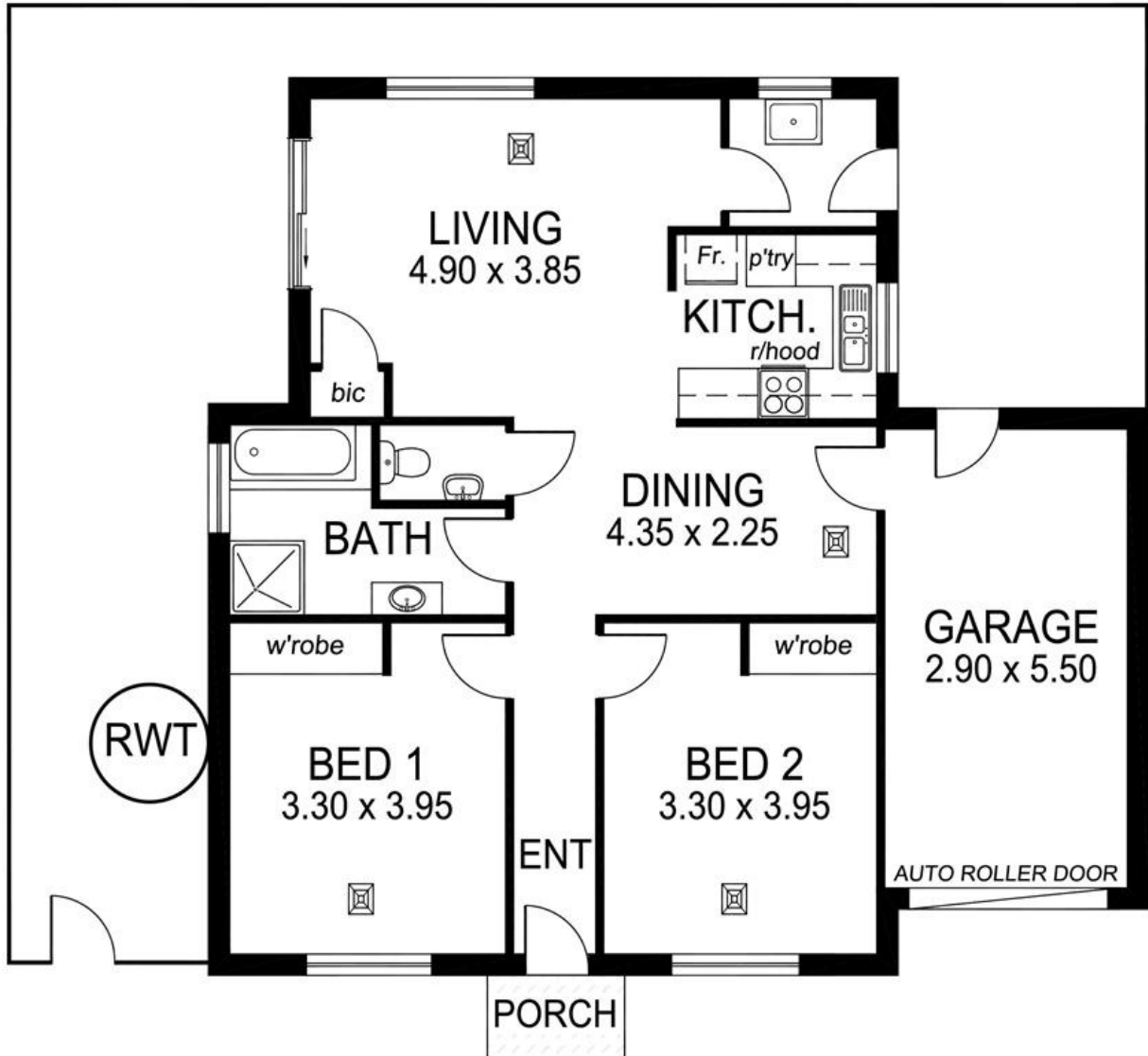
Lewis Prior First National Real Estate takes pride in presenting this property to the market. We welcome your enquiry and encourage you to make a personal appointment to inspect this property at a time that suits you. For more information or to Find Out What Your Home Is Worth . . . FREE, please contact Nick Rogers.

\$340,000 - \$360,000

ID# 11399102560



Nick Rogers
0407 547 046



TOTAL AREA:	104.30m ² /11.21sqs
(Estimate only)	(incl. porch & garage)

This drawing is for illustration purposes only.
 All measurements are approximate only and information
 intended to be relied upon should be independently verified.