

360 Bruce Crescent, Wallarah

4  2  3 

RURAL LIFESTYLE CLOSE TO TOWN

Set on 5 acres and located only a few minutes drive to the M1 Motorway, Warnervale Train Station, shops, schools and the developing Warnervale Town Centre this delightful acreage offers the perfect rural lifestyle with the convenience of being close to town.

The spacious single storey home offers 4 generous bedrooms with an ensuite and walk in robe to the main.

Ample living space includes a large lounge featuring a fireplace and a/c. Open plan dining and family room off the gourmet kitchen with stone bench tops and a huge walk in pantry.

2 separate entertaining areas at the side and rear of the home offer alfresco entertaining for all seasons.

The home comes complete with high ceilings throughout a double garage and a carport.

The property offers 5 acres with the majority being cleared land and features a veggie patch, fruit trees, dam and workshop.

This property provides a fantastic opportunity to make the tree change without the compromise of moving too far away from town. Enjoy the open space, the great lifestyle and the endless possibilities that this property has to offer.

To receive your free information e-book on this property text '360BRUCE' to 0429 272 028.

 5 acre

NEW TO MARKET

ID# 11650100916

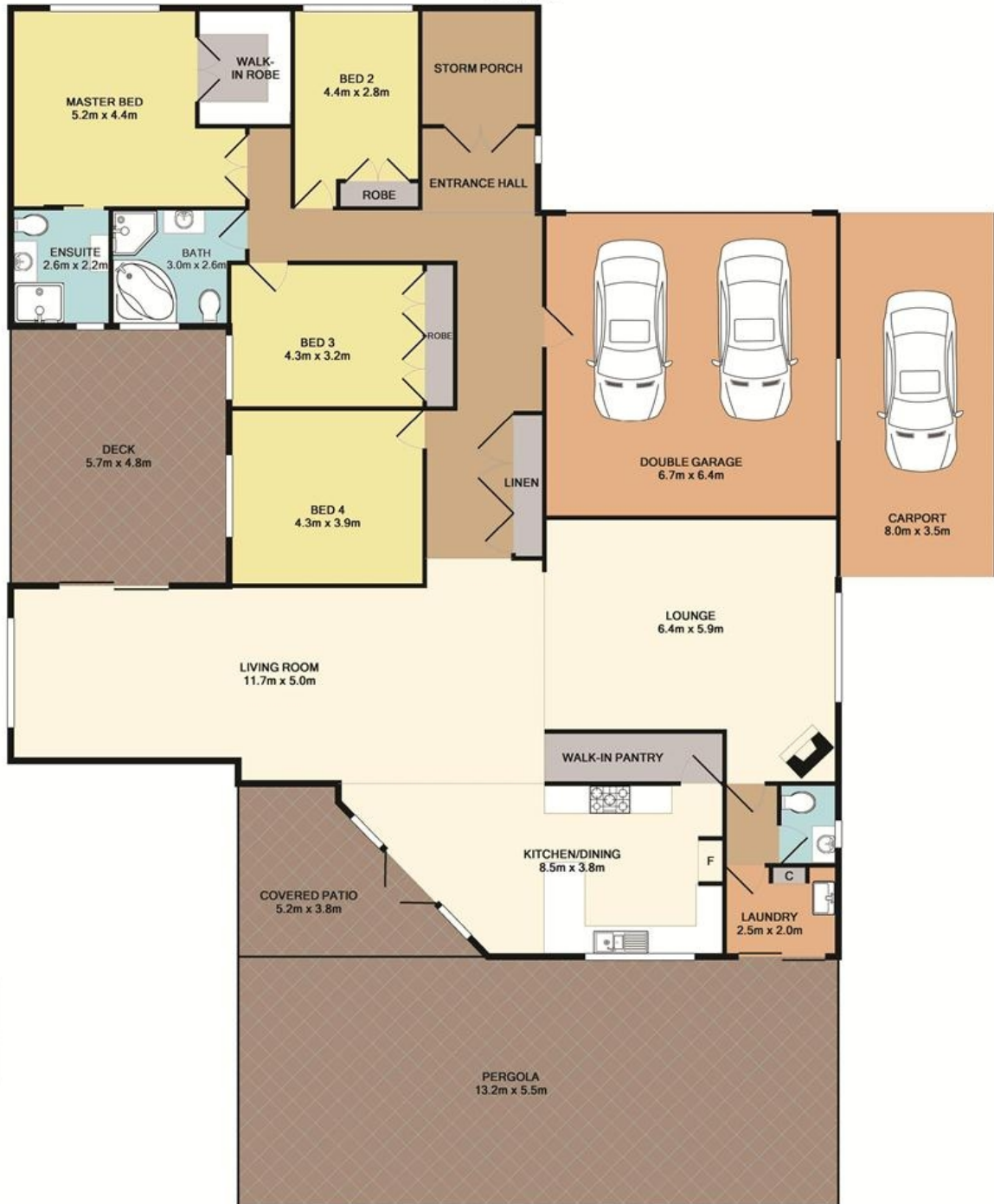
Open for Inspection

Sat 24 Feb, 12:30pm - 1:00pm



Adrian Simpson

0425 251 888



Total Approx. Floor Area 321.4 SQ.M. 3459 SQ.FT.

Measurements are approximate. Not to scale. For illustrative purposes only.

360 Bruce Crescent

Walarah

Boundaries are approximate

