



108 Sproat Street, **Portarlinton**

STUNNING BAY VIEWS!

Situated high on the hill of Sproat street and Alexander court this home has stunning views around the bay and across to the You Yangs. Three bedrooms all with built in robes, two bathrooms the main with spa bath. Open plan lounge and dining with split system air conditioning and wood heater with sliding doors out to a large sundeck which take in the bay views. Galley kitchen with eclectic oven, gas hot plates and dishwasher. This home would be ideal for weekends or permanent living on a corner block of 910m2 room for extra cars or boat and caravan.

3 2 2

910 sqm

\$629,000

ID# 11658100348



Craig Abbey
0418 525 661



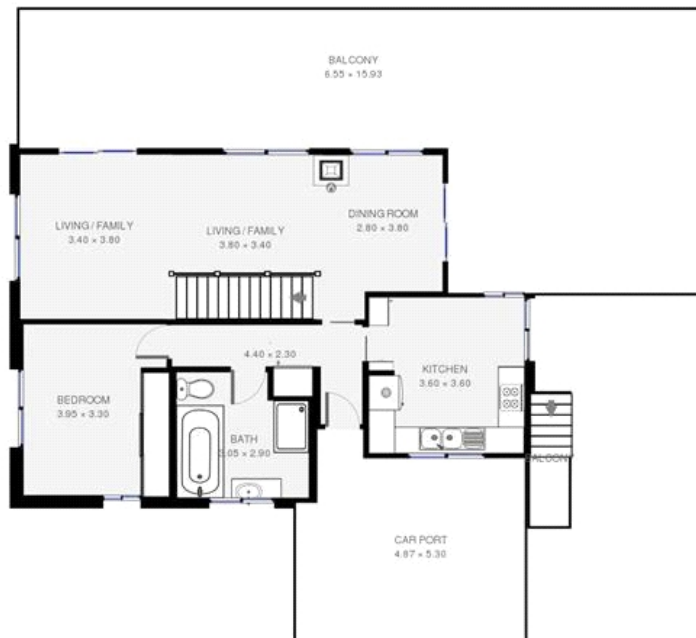
Peter Thomson
0407 838 944

The above information has been furnished to us by the vendor of each property. We have not verified whether or not that information is accurate and have no belief one way or another in its accuracy. We do not accept any responsibility to any person for its accuracy and do no more than pass it on. all interested parties should make and rely upon their own enquires in order to determine whether or not this information is in fact accurate.

Ground Floor



1st Floor



THIS FLOORPLAN IS PROVIDED WITHOUT WARRANTY OF ANY KIND. SENSOPRIA DISCLAIMS ANY WARRANTY INCLUDING, WITHOUT LIMITATION, SATISFACTORY QUALITY OR ACCURACY OF DIMENSIONS.