



30 Seaforth Drive, **Portarlinton**

3 2 2

**WALK TO THE BEACH**

Three bedroom brick veneer and cedar home is located just off the Esplanade with bay view's over look the park reserve on the beach front. Lounge and dining rooms with sliding doors out to the paved pergola area ideal outside living. Galley kitchen with electric upright stove and dishwasher. Two bedrooms downstairs both with built in robes and one with access to the main bathroom. Upstairs master bedroom with walk in robe and ensuite with corner spabath plus small second living room with balcony which takes in the bay views across the park reserve. Double lockup garage. Enclosed backyard. This home would be ideal to do up for permanent living or holidays. Block size 16.8m x 39m or 654m2.

654 sqm

**\$610,000**

ID# 11658100414



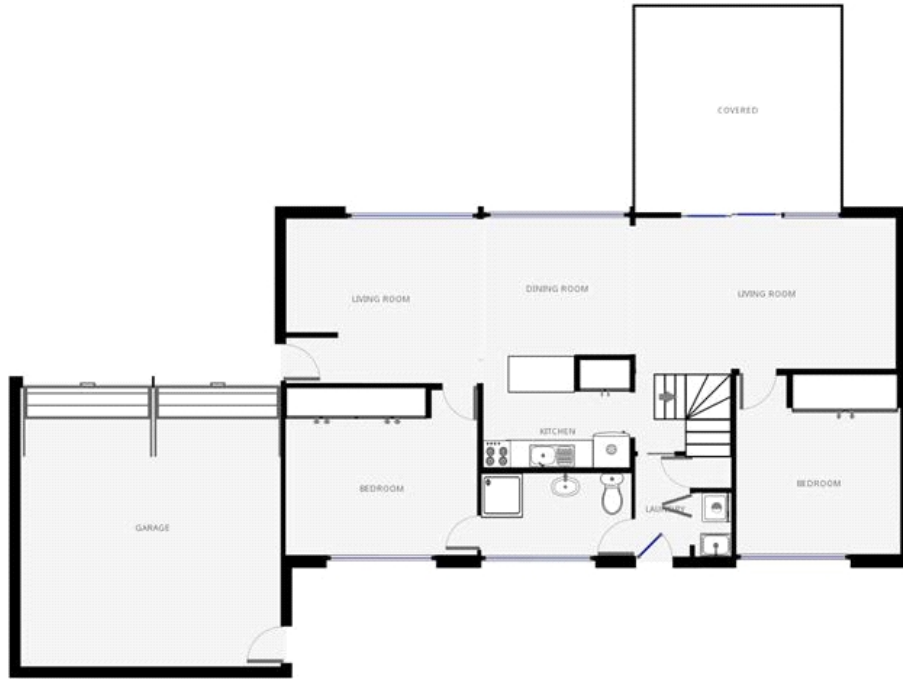
**Craig Abbey**  
0418 525 661



**Peter Thomson**  
0407 838 944

The above information has been furnished to us by the vendor of each property. We have not verified whether or not that information is accurate and have no belief one way or another in its accuracy. We do not accept any responsibility to any person for its accuracy and do no more than pass it on. all interested parties should make and rely upon their own enquires in order to determine whether or not this information is in fact accurate.

## Ground Floor



## 1st Floor



\*To be used as a Guide Only