

11a Hawthorn Street, **Portarlington**

4  3  2 

### BRAND NEW WITH BAY VIEWS

This brand new townhouse has just been completed and is ideal for permanent or holiday low maintenance living. Downstairs double garage with internal entry and large entry hall or living, european laundry, master bedroom with walk in robe and en suite, two other bedrooms with built in robes and main bathroom. Upstairs main living room and dining both with sliding doors to the sundeck which take in views across the bay. Stunning modern kitchen with stone beach tops and quality appliances. Fourth bedroom with built in robes and en suite. This townhouse comes with gas ducted heating R/C air conditioning, floating floor boards throughout, carpets in all the bedrooms, double glazed windows, rain water tank plumbed into the three toilets and landscape garden. Just move in and enjoy a new home in Portarlington with all the hard work done for you.

 458 sqm

**\$640,000 to \$660,000**

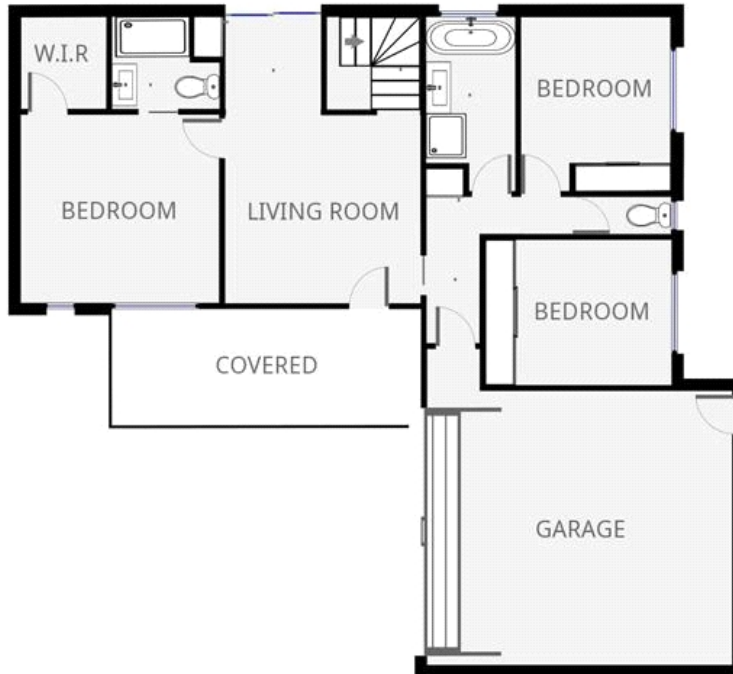
ID# 11658100417



**Craig Abbey**  
0418 525 661

The above information has been furnished to us by the vendor of each property. We have not verified whether or not that information is accurate and have no belief one way or another in its accuracy. We do not accept any responsibility to any person for its accuracy and do no more than pass it on. all interested parties should make and rely upon their own enquires in order to determine whether or not this information is in fact accurate.

Ground Floor



1st Floor



\*To be used as a Guide Only