

Chippendale

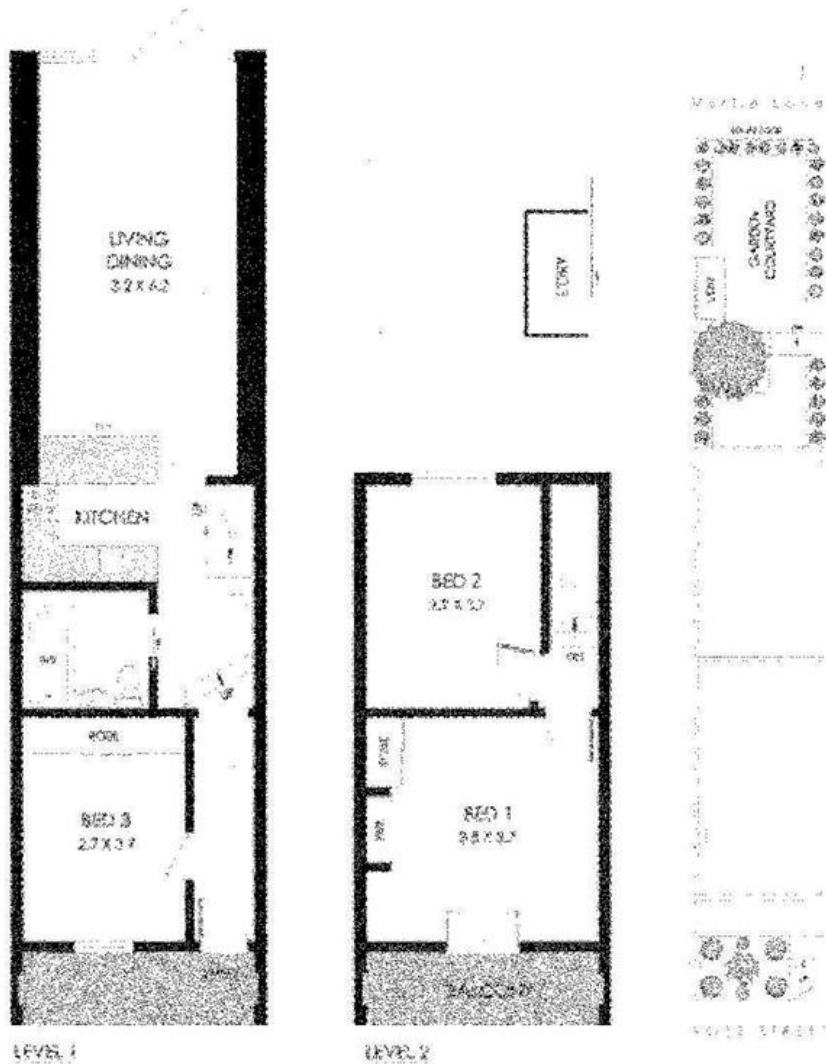
Stunning Contemporary Home in one of the area's finest streets!

This beautiful home on the high side of this quiet tree lined street has been recently renovated throughout. It currently features 3/4 bedrooms an open plan living area which flows out to a well landscaped yard which offers plenty of combined indoor/outdoor living. It has a modern bathroom, two toilets and a light contemporary kitchen. It's located only minutes from the CBD, Sydney University and University of Technology. You have a selection of restaurants, cafes and buses nearby. About 15 mins walk to King St, Newtown and only 3 minutes to Broadway Shopping Centre. Car parking for one vehicle. What a great location!

3  1  1 

Contact Agent

ID# 11711100164



Scale 1:100

PLANS DO NOT TAKE ACCOUNT OF UP TO 10% OVERSIGHT APPROXIMATE

All information contained herein is provided in good faith and does not constitute an offer of any financial product. It is intended to provide general information only. It is not intended to constitute an offer of any financial product. It is intended to provide general information only. It is not intended to constitute an offer of any financial product.

Appliances Inset	Yes
Internal Staircase	Yes
Refrigerator, Dishwasher	Yes
Gravel A/C	Yes
Pool	Yes

27

CHIPPENDALE
Land Dimensions: 4.0 x 27.0m