

33 Quail Drive, Lara

4 2 2

### THE ULTIMATE RESIDENCE

This custom built 4 bedroom residence oozes class and quality, it will take your breath away upon setting foot inside so prepare to be impressed and inspired with what is on offer. There is an industrial feel to the residence, just visualise polished concrete flooring, 9 foot ceilings, matte black tap ware, matte black kitchen sink, and door handles, expansive living zones and more. The master bedroom is spacious and flows through to the his and hers fitted out wardrobes. The ensuite has tiling from floor to ceiling, an oversized shower and twin vanities with stunning stone bench tops and cabinetry. There are three large living zones. There is a movie theatre, a large lounge room and a rumpus/ study zone in the children's/ teenage wing. The kitchen is a stunning masterpiece from its thick white stone benchtops, 900m2 free standing "Ilve" oven and rangehood, plenty of soft closing drawers and cupboards and a large butlers pantry with dishwasher and an extra sink. The laundry has plenty of cupboards and a walk in storage/ linen cupboard. The bedrooms are generously sized with extensive fitted out wardrobes. Outside boasts a double brick garage with internal access and good side access with exposed aggregate driveways, patios and paths ( Plenty of room for the shed, boats and cars.) There is an outside powder room and landscaped gardens with plenty of room to entertain. Other features of this outstanding home are the low voltage lighting, solid high doors, ducted heating and ducted refrigerative cooling, double glazed windows and doors, pure quality in the fixtures and fittings. Rarely does a home of this caliber come on to the market. Call Sarah Carey on 0403064510 today to book your inspection.

646 sqm

**\$790,000 - \$820,000**

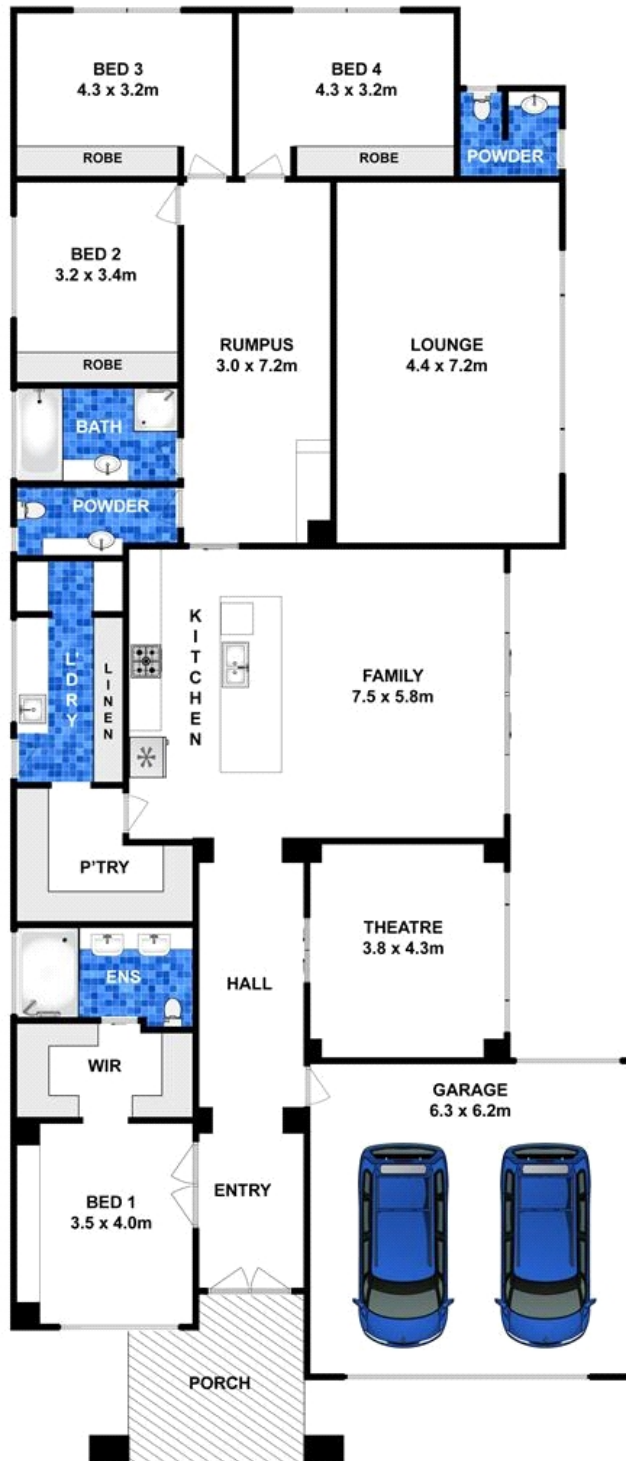
ID# 11819100685



**Sarah Carey**  
03 5282-1155  
0403 064 510

Due Diligence checklist are available at [www.consumer.vic.gov.au/duediligencechecklist](http://www.consumer.vic.gov.au/duediligencechecklist)

\*Every precaution has been taken to establish accuracy of the above information but does not constitute any representation by the vendor or agent



## 33 Quail Drive, Lara

THIS FLOORPLAN IS A SKETCH ALL DATA SHOWN IS GENERAL ONLY NB: ALL DIMENSIONS STATED ARE APPROXIMATE ONLY AND SHOULD NOT BE TAKEN AS DEFINITE