



115/79-91 Macpherson Street, **Warriewood**

2  2  2 

PREMIUM APARTMENT OFFERING COMFORT & CONVENIENCE

Perfect for first home buyers, downsizers and investors, this stylish apartment boasts an ideal north aspect, a large covered entertainer's balcony and showcases modern finishes throughout. Situated in the 'Oceanvale' complex appointed with a 25m lap pool, plunge pool, children's pool, gymnasium, spa and sauna room, BBQ area and children's playground.

- Open-plan living & dining area, seamlessly extending to the large balcony
- Private and sunlit covered balcony, perfect for entertaining and BBQs
- Gourmet Caesarstone kitchen with breakfast bar, gas cooking, dishwasher and quality stainless steel appliances
- Sunny bedrooms with mirror built-in robes, oversized master with full size ensuite
- Stylish bathrooms appointed with quality finishes, stone bench tops, frameless shower screens and floor-to-ceiling tiles
- Study nook, reverse cycle air-con, internal laundry, linen press and downlights throughout
- Pet friendly, security building with lift access, tandem parking with storage cage
- Close proximity to beautiful parklands, the newly built IGA Express and Warriewood Square, schools and city transport*

Perfect for first home buyers, downsizers and investors!

Strata Rates: Approx. \$1256pq
Council Rates: Approx. \$252pq
Water Rates: Approx. \$168pq

 113 sqm

\$780,000 - \$830,000

ID# 11841100418

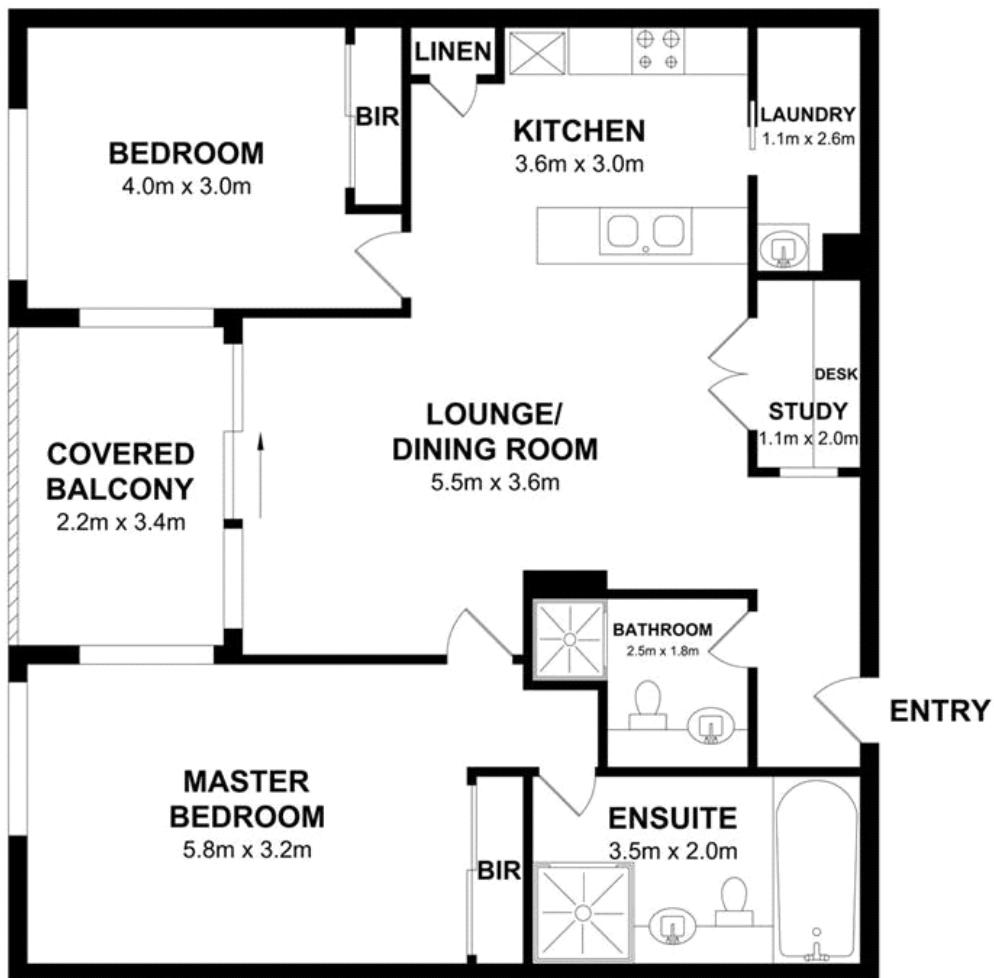
Open for Inspection

Wed 17 Jan, 11:00am - 11:30am
Sat 20 Jan, 10:00am - 10:30am



Trent McKay
0419 288 867

The above information has been furnished to us by the vendor of each property. We have not verified whether or not that information is accurate and have no belief one way or another in its accuracy. We do not accept any responsibility to any person for its accuracy and do no more than pass it on. all interested parties should make and rely upon their own enquires in order to determine whether or not this information is in fact accurate.



Unit 115, 79-91 Macpherson Street, Warriewood Measurements are approximate. Not to scale. Illustrative purposes only. Open2view does not take any responsibility for any information supplied.