



182 Mooloolaba Road, **Buderim**

5  4  3 

Rare Dual Key On Top Of Buderim With Ocean Views - Ref: 3768

\*\*\*Investor Alert - 5.5%+ Yield \*\*\*

This dual-key living property boasts character and charm with a 100 year old fig tree and South East facing ocean views seen from four large decks! Sit back, relax and soak up that delectable sunrise whilst having an attractive opportunity to make money off renting double space.

This designer home has an almost mirror image dual space with a wall that separates the two which can easily be removed or keep it as is and rent out or airbnb. The home is split over two levels with a large proportion living space, high ceilings and polished timber floors. The upper floor in both areas are dedicated to living and dining. Downstairs have two bedroom and then three bedrooms. Both master bedrooms have spa ensuites and a private deck.

The driveway has a shared triple carport with additional off road parking with no maintenance gardens. With minutes to the main street of Buderim's eclectic cafs, boutiques and world class schools to the picturesque beaches and restaurants of Mooloolaba and Cotton Tree this property is a first-class find!

Rental Appraisal:

Unit 1 \$400-420/week (2 bedroom)

Unit 2 \$480-510/week (3 bedroom)

Approx Int: 302m

Approx Alfresco: 80m

Approx Deck: 35m

Total: 417m

Call Johny Blaikie on 0409 039 730 to arrange your private viewing today.

 954 sqm

**OFFERS OVER \$810,000**

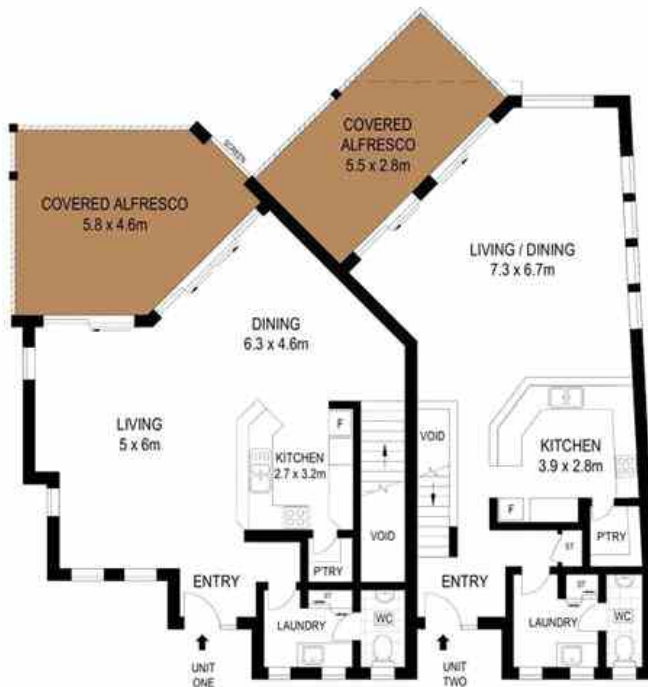
ID# 11890100362



**Johny Blaikie**  
0409 039 730



LOWER LEVEL



UPPER LEVEL



APPROX. INT: 302m<sup>2</sup>  
 APPROX. ALFRESCO: 80m<sup>2</sup>  
 APPROX. DECK: 35m<sup>2</sup>  
 TOTAL: 417m<sup>2</sup>