



110A Brassey Street, **Maryborough**

2 1 1

BRAND NEW HOME

- Open plan living
- 2 Bedrooms with BIR's, bathroom with separate bath and shower
- Front Portico
- Garage with storage area with second toilet and direct access to house
- Colourbond fencing, private yard
- Own title – No Body Corporate
- ** \$20,000 State Government First Home Owners Grant available to Approved First Home Buyers**

433 sqm

\$264,900

ID# 11964101342



Robert Young
0409 799 298

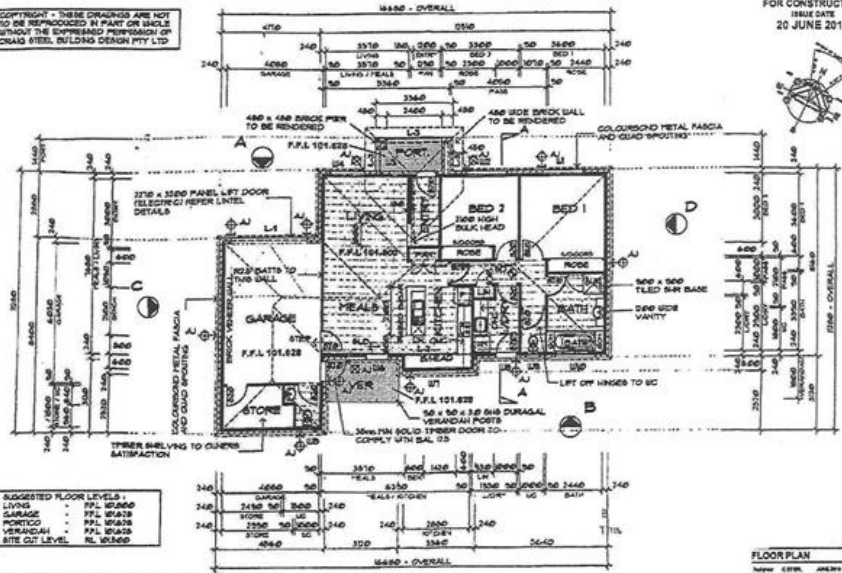


Craig Bell
0407 824 372

The above information has been furnished to us by the vendor of each property. We have not verified whether or not that information is accurate and have no belief one way or another in its accuracy. We do not accept any responsibility to any person for its accuracy and do no more than pass it on. all interested parties should make and rely upon their own enquires in order to determine whether or not this information is in fact accurate.

COPYRIGHT - THESE DRAWINGS ARE NOT TO BE REPRODUCED IN PART OR WHOLE WITHOUT THE EXPRESS PERMISSION OF CHAD BATES BUILDING DESIGN PTY LTD

FOR CONSTRUCTION
ISSUE DATE
20 JUNE 2016



SUGGESTED FLOOR LEVELS:

LIVING	= RFL 101.828
GARAGE	= RFL 101.828
PORTICO	= RFL 101.828
VERANDAH	= RFL 101.828
STEEL OUT LEVEL	= RL 101.828

LINTEL MEMBER SCHEDULE

MEMBER	DESCRIPTION
L-1	200 x 200 x 8 GALVANIZED STEEL LINTEL
L-2	150 x 150 x 8 GALVANIZED STEEL LINTEL
L-3	100 x 100 x 8 GALVANIZED STEEL LINTEL (MUST BE PAINTED)

FLOOR PLAN 1:100
AS 3105-2009 BAL 125
AJ DENOTES LOCATION OF WALL HEIGHT ARTICULATION JOINTS
OHC DENOTES OVERHEAD CABLES

BUILDING AREA:

LIVING	= 103.32 sq m (111 sq ft)
GARAGE / STORE	= 37.00 sq m (397 sq ft)
PORTICO	= 4.83 sq m (52 sq ft)
TOTAL	= 145.15 sq m (1563 sq ft)

FLOOR PLAN
Author: C. BATES
Checked: C. BATES
REGISTERED
BATES BUILDING DESIGN
10/12/2016
10/12/2016