



161 Axiom Way, Acton Park

5  2  8 

Superb Lifestyle

Set in a park-like bush setting of 0.6921ha is this spacious and versatile five bedroom brick home - it has quality written all over it! The fully fenced property is gated and has two enclosed courtyards. The home is very adaptable and can cater for a large family with the living arrangements.

There are two living areas with their own external entrances. These spaces are warmed by a generous sized wood heater and a reverse cycle heat pump. An open plan kitchen with walk-in pantry and ample cupboards, adjoins the dining area which has raked ceilings and an atrium window to expose extra daylight.

Situated adjacent to the home, is a large building which houses a swimming pool, spa and sauna, and change rooms. There is also an enclosed grassed entertainment area accessed through the sliding doors from the swimming pool.

There is a brick garage, with attached carport, several shelter sheds and a fenced vegie garden which add to the surrounding yard.

The property is situated on a bus route and schools close by.

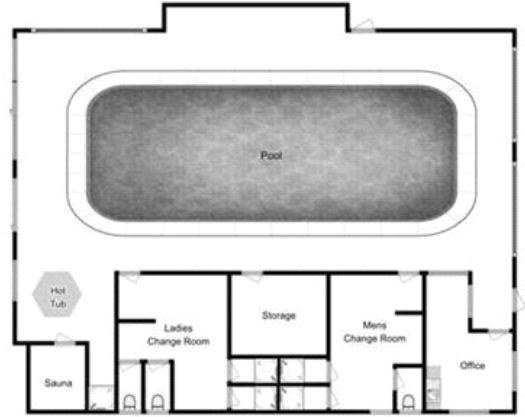
 6,921 sqm

\$895,000

ID# 11983101340



Gloria Park
0407 486 560




 Features & Fittings are for display only, not to scale.
 Produced by open2view.com