



5 Limestone Court, Warragul

Fabulous Family Living!

Located in the Premier Waterford Rise Estate in a quiet court location, this near new residence, with impeccable presentation offers outstanding family living. Set upon a flat 595m2 North facing allotment within a short walk from the Early Learning Child Care Centre, parkland/playgrounds and a short drive from the Warragul CBD and Freeway access. The home has an easy living open plan design with 4 bedrooms, 2 bathrooms, multiple living spaces and gorgeous kitchen with stone bench tops, island bench, huge stove and dishwasher. Neutral décor features throughout and ducted heating and split system air conditioning ensure year round comfort. Outside the complimentary gardens are landscaped for easy care, there is a lovely alfresco area that is accessible via stacker doors from the living area plus a double remote garage and parking area for a boat, caravan or trailer. This property will suit a variety of home buyers is sure to be snapped up in a flash!

4 2 2

595 sqm

\$497,000

ID# 12013100069

Open for Inspection

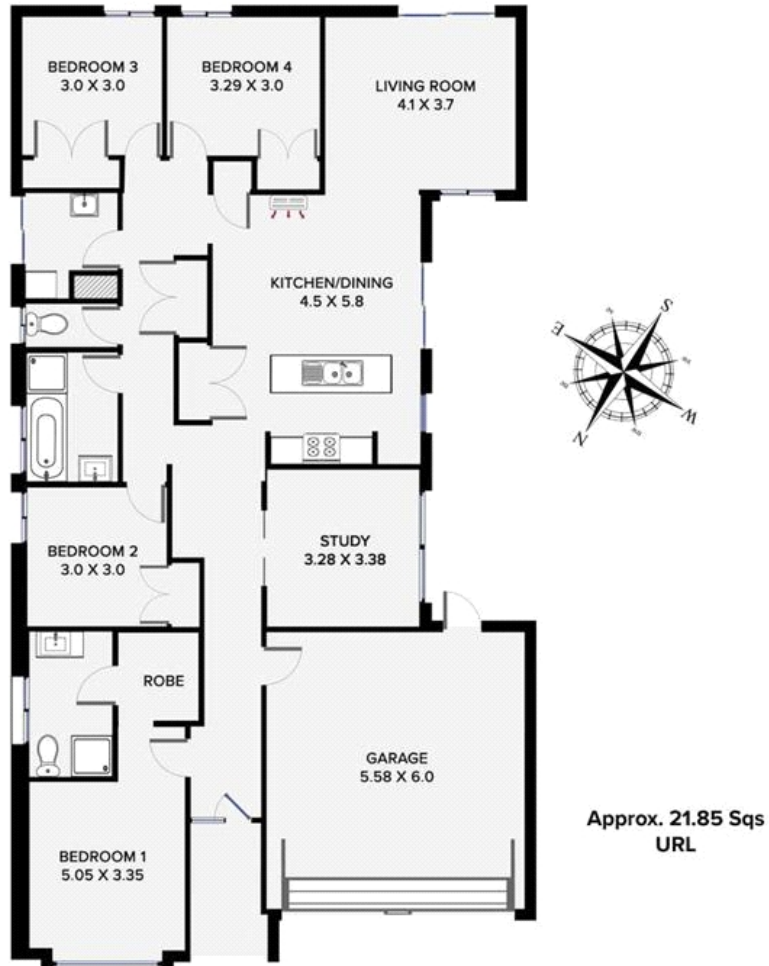
Sat 20 Jan, 12:30pm - 1:00pm



Phil Gallagher
0427303284

The above information has been furnished to us by the vendor of each property. We have not verified whether or not that information is accurate and have no belief one way or another in its accuracy. We do not accept any responsibility to any person for its accuracy and do no more than pass it on. all interested parties should make and rely upon their own enquires in order to determine whether or not this information is in fact accurate.

5 Limestone Court, Warragul



This floorplan is provided without warranty of any kind and is for illustration purposes only. Although every care has been taken in the preparation of this plan, we will not be liable for any misinterpretation in any part of this plan. Purchasers should make their own arrangements to ensure the accuracy of the information provided.