



6 Thomas Weston Court, Yarragon

3 2 4

ULTIMATE shed/workshop with A/C

This is not just a house but a warm & inviting home, perfectly positioned within walking distance to the local primary school, playground & recreational facilities as well as the beautiful town centre of Yarragon. Set upon a flat 728m² allotment in a quiet court location, taking in stunning mountain views, this property is sure to attract a variety of home buyers. Comprising of master with WIR, en-suite with his & her vanity, BIR's to the remaining 2 bedrooms, both serviced by a centrally located bathroom & separate toilet. The light filled open plan kitchen, dining & living area opens onto the spacious alfresco/2nd living with café blinds for added privacy. There is central heating, split system air conditioner, dishwasher, solar gas instantaneous hot water and a double remote garage. If you're not already sold; the yard boasts landscaped gardens, concreted side access with extra off-street parking plus a large 10m x 6m shed with power, wood heater, evaporative cooling, ideal workshop/storage or additional vehicle parking. This is an amazing opportunity to enter the property market, perfect downsizer or excellent addition to your investment portfolio. Call us today to book your private inspection.

728 sqm

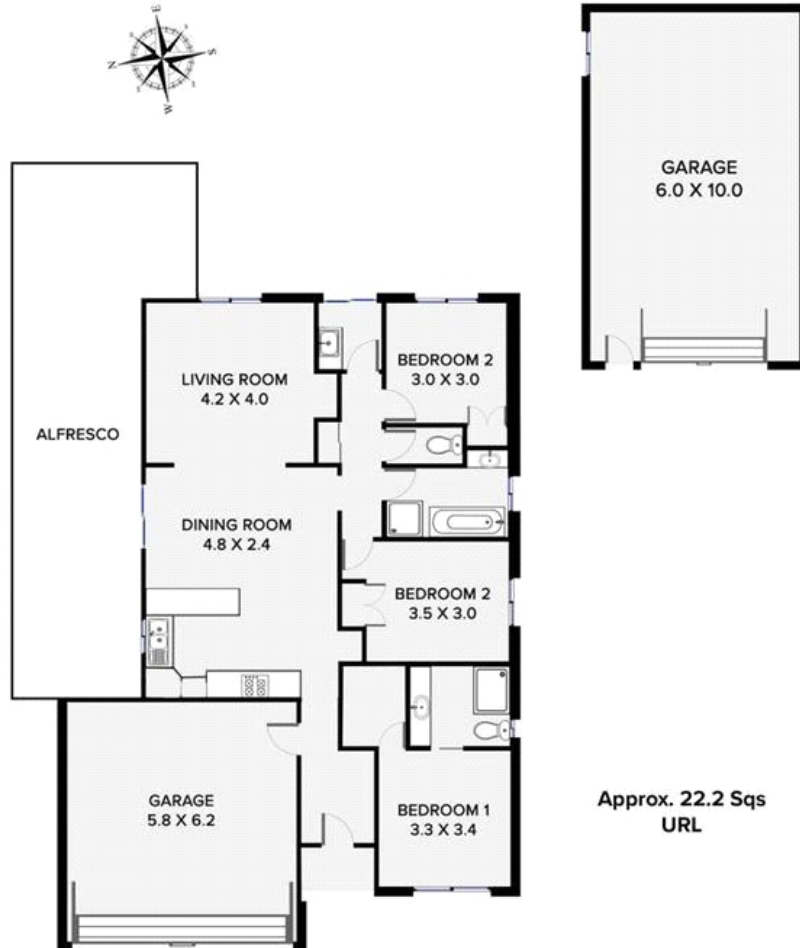
\$425,000

ID# 12013100077



Stuart Brock
0407 610 700

6 Thomas Weston Court, Yarragon



This floorplan is provided without warranty of any kind and is for illustration purposes only. Although every care has been taken in the preparation of this plan, we will not be liable for any misinterpretation in any part of this plan. Purchasers should make their own arrangements to ensure the accuracy of the information provided.