



1/14 Albert Lane, Taree

Hidden Potential within the CBD

First National Commercial Shultz \ Taree are pleased to offer for Lease, 1/14 Albert Lane, Taree.

- 100sqm approx.
- Rear roller door access.
- Prominent location in busy council car park – Chapman place Car park.
- Formally used as Laundromat.
- Adjoining locally owned and operated Woody's wash and wax.

Rental: \$15,000pa + GST + Outgoings

\$15,000 pa + GST + Outgoings

ID# 41857121090

Property Type Industrial, Sales
showrooms/Bulky goods,
Office/Showroom

Building Area 100 sqm (approx)

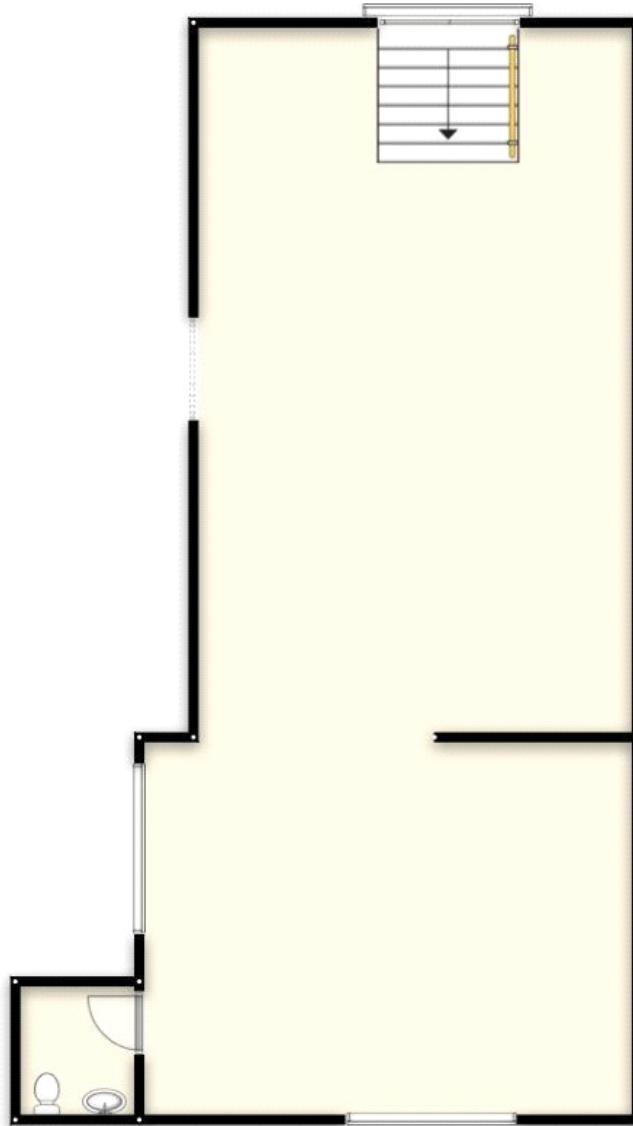
Date Available Now



Troy McCormack

0447 611 541

Bay 1/14 Albert Lane, Taree, NSW, 2430



Scale - 1:500

Measurements approx. only