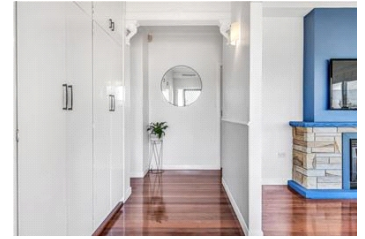




SYLVESTER
Real Estate

Where A Handshake Still Counts!



105 Rawson Street, Kurri Kurri

 4  2  3

\$525,000 - \$545,000

The Spacious Crowd Pleaser

Web ID: 12718122123

**SAMANTHA
SHONE**
0423682959



Offering stunning modern elements and large spaces, this is a shining example of a family home. Positioned on a sprawling 1012m² lifestyle block complete with a beautiful backyard, rear lane access and a huge shed with power. Featuring 4 bedrooms, 2 bathrooms, both indoor/ outdoor living zones & a formal dining room off the kitchen. Upon entry you are greeted by a relaxing front verandah and outside; an outdoor bar area which is just one of the many features that enhances this property Holding original federation character traits such as high ceilings, decorative cornices, glossy timber floorboards and glorious amounts of natural light its sure to impress its new family! Property Features; - 4 extra large bedrooms; master retreat with ensuite & large built-in robe - Light soaked living spaces - Modern main bathroom with bath and separate shower - Spacious front verandah ideal for soaking up the morning sun - Modern Kitchen with abundance of cupboard & bench space, complete with stainless steel appliances and dishwasher - Ducted air-conditioning perfect to cool or heat entire home - Solar HWS & Natural gas heating - Renovated throughout, freshly painted & added characteristic touches make the home move in ready! - Gorgeous laundry with great storage and bench space - Plenty of extra inclusions - Ample parking & a huge 8m x 5.3m double garage adjoining a 7m x 5.3m workshop/ storage area - Fully fenced private yard - Only minutes from the Hunter Express Way If you are looking for the perfect home to raise your family, located in a prime position in Kurri Kurri close to schools, shops and transport this is a home you must inspect. For more information or to book an inspection call Samantha Shone on 0423 682 959